

绿色 | 安全 | 健康
Green | Safety | Health

海加®
HIGHKA



海加装配式 CFC 楼板系统

ASSEMBLING CFC FLOOR SYSTEM

海加绿色科技集团旗下

广东海加绿色新材料有限公司

GuangDong Highka Green New Material Co., Ltd

广州市广园东路广东省农科院环境艺术产业园 A 区

Tel : 020-8202 8561 8202 8560

Fax : 020-8202 8015

highka@highkar.com

www.highkar.com



海加微信公众号

Cooperation

www.highkar.com

企业简介

Company Profile

广东海加绿色新材料有限公司

广东海加绿色新材料有限公司（简称：**海加 /HIGHKA**）于2014年正式成立，总部位于广东省广州市天河区广东省农科院环艺所，生产基地分布于广东、河北、广西，并在深圳、广州、上海、北京、南宁、海口、厦门设有营销中心。

海加是一家集技术、研发、设计、制造、营销、服务于一体的高新技术企业。营销及服务面向全国、澳洲、非洲、东南亚等海外市场。

海加倡导“绿色享有未来”的理念，带着国外先进的房屋建造理念，进入建筑及房屋市场，并以现代科技、健康、生态、智能、节能建筑集成系统相结合，推出绿色、节能及集成化、模块化、工业化、可循环化的装配式产品及应用系统解决方案。致力于绿色装配式集成房屋、绿色装配式建筑产品及系统应用解决方案的生产制造企业，并专业提供绿色建筑、声学、BIM、装配式建筑技术。

超10多年的行业经验，专注专业于国际品牌酒店的**隔声功能装饰性墙体系统解决方案推广与应用**。专业研发、匠心制造、专业服务，公司以**装配式房屋、墙板系统、天花系统、地板系统、轻钢制造**为五大核心主营产品及应用系统。

海加公司

广州市重点公共建设项目入库品牌
绿色集成建筑房屋制造商
绿色集成建筑系统制造商
国家高新技术企业
专精特新企业
科技型企业
创新性企业

GUANGDONG HIGHKA GREEN NEW MATERIAL CO., LTD

Guangdong HIGHKA Green New Material Co., Ltd. (HIGHKA for short) was officially established in 2014. It is headquartered in the Guangdong provincial academy of agricultural sciences environmental art institute, Tianhe District, Guangzhou City, Guangdong Province. Its production bases are distributed in Guangdong, Hebei and Guangxi, And in Shenzhen, Guangzhou, Shanghai, Beijing, Nanning, Haikou, Xiamen with marketing centers.

HIGHKA is a high-tech enterprise integrating technology, R & D, design, manufacturing, marketing and service. Marketing and services are oriented to overseas markets such as China, Australia, Africa and Southeast Asia.

HIGHKA advocates the concept of "Green enjoy in the future", enters the construction and housing market with foreign advanced housing construction concept, and combines modern science and technology, health, ecology, intelligence and energy-saving building integrated system to launch green, energy-saving and integrated, modular, industrialized and recyclable assembled products and application system solutions. It is committed to manufacturing green prefabricated integrated houses, green prefabricated building products and system application solutions, and specializes in providing green building, acoustics, Bim and prefabricated building technology.

With more than 10 years of industry experience, we focus on the promotion and application of sound insulation and decorative wall system solutions for international brand hotels. Professional R & D, ingenious manufacturing and professional services. The company's five core products and application systems are prefabricated houses, wallboard systems, ceiling systems, floor systems and light steel manufacturing.

HIGHKA company

Warehousing brands of key public construction projects in Guangzhou
Green integrated building house manufacturer
Green integrated building system manufacturer
National High-tech Enterprise
specialized and sophisticated enterprises
Scientific and technological enterprise
Innovative enterprises

企业文化和核心理念

以绿色为核心

绿色永远是时代发展的主题，海加倡导“绿色享有未来”的理念，坚持可持续发展道路。

以客户为中心

客户是企业发展的源动力，满足客户需求，解决客户问题，服务客户是企业的重点工作，以客户为中心是企业长远发展的重要战略。

以奋斗者为本

团结协作，团队至高无上，长期激情奋斗，方能保证团队内部的活力和创新，为企业保持持久生命力。

CORPORATE CULTURE AND CORE VALUE

Green For The Core

Green is always the theme of the development of the times. HIGHKA advocates the concept of "green enjoys the future" and adheres to the path of sustainable development.

Customer-Centric

Customers are the source power of enterprise development, meeting customer needs, solving customer problems, and serving customers are the key work of the enterprise, and customer-centric is an important strategy for the long-term development of the enterprise.

Striver Oriented

Unity and cooperation, team supremacy and long-term passionate struggle can ensure the vitality and innovation within the team and maintain lasting vitality for the enterprise.



质量管理体系
Quality management system



专利
Patent



产品介绍

Product introduction

海阁板（海加装配式CFC楼板）是由优质水泥、高纯石英砂、植物纤维等多种有机及无机物质组成，100%不含石棉、甲醛等有害物质，利用先进自动化生产设备，经过制浆、抄取、静养、加压、高温蒸压养护工艺生产成型，形成紧密、牢固的晶体结构；是一种环保、安全、多功能高级建筑用板材。海阁板适用于任何建筑的隔层，具有良好的防水防潮、隔热保温等功能。

Higer board (HIGHKA ASSEMBLING CFC FLOOR SYSTEM) consists of several organic and inorganic materials including superior low alkali cement, high-purity quartz sand, vegetable fiber, etc., which is 100% asbestos and formaldehyde free, not containing other harmful materials. With the advanced automatic production equipment and skillful producing process, forming into a close and firm crystal shape through the treatment of autoclave at high temperature and special technology. Higer board is an environmental, safe and multifunctional high-level construction board material. Higer board is suitable for interlayer of any construction. In addition to the functions of waterproof and damp resistance, heat insulation and so on, it also can decorate the ceiling.

规格

Application Area

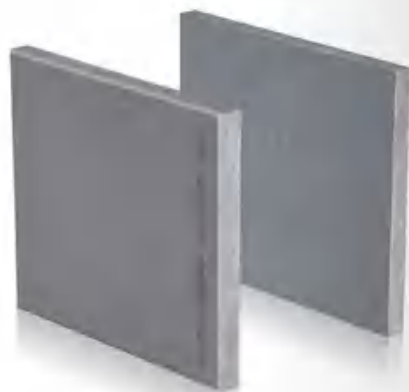
2440 * 1220 * 15、18、20、24、25、27、30mm

应用领域

Application Area

主要应用于：LOFT公寓的楼层（上下双层复式结构）、旧楼加层改造性楼面、集成房屋地板、集成箱房地板等等……

Mainly apply to: floor of LOFT apartment (compound structure with upper and lower layers) > reconstruction floor of storey added in old building, Integrated house floor, Integrated box room floor and etc...



产品性能及优点

Product performance and advantages

- 1、海阁板100%不含石棉，中国环境标志产品认证；
- 2、A类材料，不释放任何有害物质，符合GB6566-2010《建筑材料放射性核素限量》；
- 3、A级不燃性，遇火无毒气释放、烟指数为零，符合GB8624-2012《建筑材料及制品燃烧性能分级》；
- 4、使用寿命长，水泥、石英砂等无机基材，其特点与建筑主体相同使用寿命周期；
- 5、缩短施工周期、干作业、高效快捷。

1. Higer board is 100% asbestos free and certified by China Environmental Labeling Product;
2. Class A materials do not release any harmful substances and comply with gb6566-2010 radionuclide limits for building materials;
3. Class A incombustibility, no toxic gas release in case of fire and zero smoke index, in accordance with gb8624-2012 classification of combustion performance of building materials and products;
4. Long service life. Inorganic substrates such as cement and quartz sand have the same service life cycle as the main building body;
5. Shorten the construction period, dry operation, efficient and fast.



系统优势

System advantages

- ◆ 改变传统的依赖工人手艺的施工手段，减少材料安装对工人技能的要求，提高施工效率；
- ◆ 材料采用大规模工厂化加工、现场装配的施工方式，减少湿作业，高度成品化、集成化；
- ◆ 配套完善的连接件、工具和辅材，完成质量更可控；
- ◆ 装饰层与结层分离、减少建筑主体的影响，提升隔热保温性能，防潮效果更好，耐久性更强；
- ◆ 整合工人培训资源，建立工人培训体系，通过灌输新技术输出革新的技能工。

Change the traditional construction method relying on workers' skills, reduce the requirements of material installation on workers' skills, and improve the construction efficiency;

The construction method of large-scale factory processing and on-site assembly is adopted for materials to reduce wet operation, and highly finished and integrated;

The complete set of connectors, tools and auxiliary materials makes the completion quality more controllable;

The decorative layer and the bonding layer are separated to reduce the impact of the main body of the building, improve the thermal insulation performance, improve the moisture-proof effect and durability

Integrate worker training resources, establish a worker training system, and export innovative skilled workers by instilling new technologies.

20%

节约人力
Save manpower

40%

工期缩减
Duration Reduction

60%

节能降耗
Energy Saving

95%

维修降低
Maintenance reduction

100%

环保部品
Environmental protection parts



装配式CFC楼板系统应用

Application of prefabricated CFC floor system

装配式CFC楼板系统可使用在LOFT公寓、商场、写字楼或工厂等场所，可协同机电、暖通、消防、给排水、内装饰等设计安装。

采用钢结构体系、质轻、受力好、易加工，具有快速装配与可拆卸可充分利用的优点。

主部件：1、CFC楼层板（海阁板） 2、钢结构体系 3、轻质吊顶

附件包括：1、承压型隔音减震垫 2、隔声填充 3、紧固件

The prefabricated CFC floor system can be used in LOFT apartments, shopping malls, office buildings, factories and other places, and can be designed and installed in cooperation with electromechanical, HVAC, fire protection, water supply and drainage, interior decoration, etc.

It adopts steel structure system, light weight, good stress, easy processing, and has the advantages of rapid assembly and disassembly, which can be fully utilized.

Main components: 1. CFC floor board (Higer board) 2. Steel structure system 3. Lightweight ceiling

Accessories include: 1. Pressure-bearing sound insulation and shock pad 2. sound insulation filling 3. fasteners



绿色环保 防火阻燃 防潮防霉 轻质高强 易于装饰 隔音隔热



楼层板受力计算

Floor slab force calculation

集中荷载

对于居住应用，表一列出最大集中荷载。

Concentrated Load

For residential applications, the maximum concentrated load is listed in table 1.

跨度/托梁间距 (mm) span/joists distance (mm)	厚度 (mm) Thickness (mm)	最大集中荷载 (kN) Maximum concentrated load(KN)
305至610mm From 300 to 600mm	20	2.9
	24	5.2
	25	5.6

均布活荷载

表格中规定了居于305mm至610mm之间托梁间距的最大均布活荷载。

若商业应用与住宅应用有着相似的服务条件，并且集中荷载要求不超过1.8kN(如，卫生间或浴室需要铺瓷砖的地方)，则托梁之间距离无须调整。

Uniformly Distributed Live Load

Table stipulated the maximum concentrated load of the joists distance between 305mm to 610mm.

If commercial applications share the similar service conditions with residential applications, and the concentrated load is required not exceeding 1.8 KN (e.g., the places that need tiling in the bathroom), the joists distance no needing adjustment.

海阁板对应支撑跨距下的可以承受的均布活荷载（干气环境）单位KN/m²

The range of uniformly distributed live load that Higer Board Corresponding support span can endure (in the dry gas condition)unit: KN/m²

厚度 T (mm)	支点间距 Fulcrum distance (mm)	305	350	407	450	500	550	610
25		13.97	10.61	7.85	6.42	5.20	4.30	3.49
24		12.55	9.53	7.05	5.76	4.67	3.86	3.14
20		8.20	6.23	4.60	3.77	3.05	2.52	2.05

海阁板对应支撑跨距下的可以承受的均布活荷载（饱水环境）单位KN/m²

The range of uniformly distributed live load that Higer Board Corresponding support span can endure (in the saturated condition)unit: KN/m²

厚度 T (mm)	支点间距 Fulcrum distance (mm)	305	350	407	450	500	550	610
25		13.26	10.07	7.45	6.09	4.93	4.08	3.31
24		11.97	9.09	6.72	5.50	4.45	3.68	2.99
20		7.80	5.92	4.38	3.58	2.90	2.40	1.95

注：以上数字由抗折强度控制

Note: the figures above are controlled by flexural strength

施工工艺流程

Construction technology process

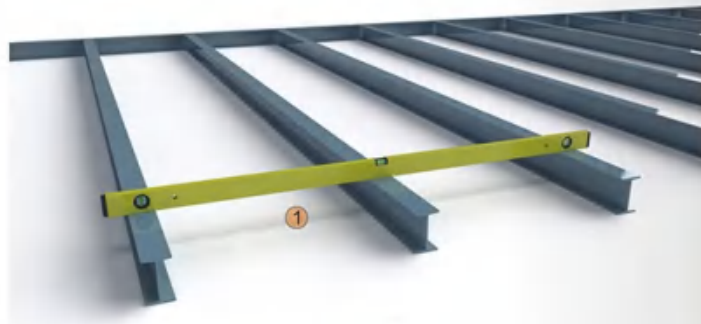
1

计算地板托梁的中距，确保正确板厚度的选用。

Calculate the middle distance of the floor joist and ensure the selection to the correct thickness of the board.

海阁板可以在框架上进行横向和纵向排布。在框架上进行纵向排布更佳，减少板的裁剪损耗。裁剪后多余的板可用于需要补板的地方。

Higer board can be arranged horizontally and vertically on the frame. It is better to arrange vertically on the frame, which can reduce the cutting loss of the board. After cutting, the extra part can be used to somewhere need to be filled up.



楼板托梁必须水平 ① The floor joist must be horizontal.



- | | |
|-------------------|--|
| ① 最大托梁间距 (见第7页表格) | maximum space between joists. (See the form on P8) |
| ② 最大450mm间距 | maximum space 450mm |
| ③ 边距最少12mm | minimum margin 12mm |
| ④ 离板边距离至少12mm | minimum margin to the board 12mm |
| ⑤ 角边距50mm | corner margin 50mm |
| ⑥ 与墙体边距最少5~10mm | The minimum wall margin is 5-10mm |

2

安装要求

在海阁板上钻隔离孔，10号螺钉要用6mm的埋头钻，可以钻到直径为6.2至6.3的孔。孔深为1mm左右，这个孔深是螺钉沉入板后螺钉顶部到板顶部的高度。注意：不要用锤。

Installation requirements

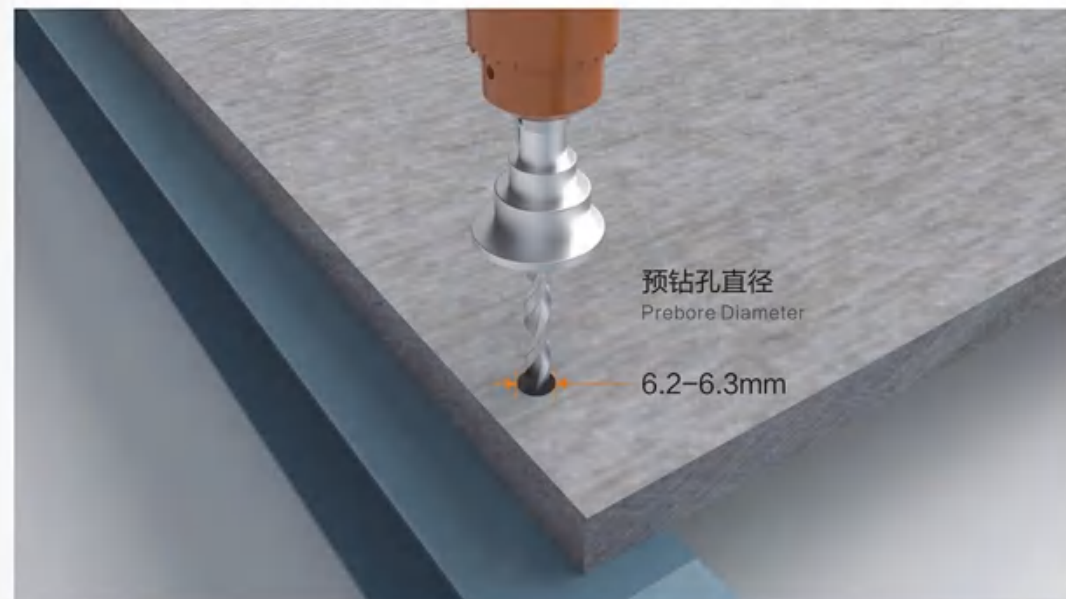
Drill a hole in the Higer board, the screw no.10 should be drilled with a 6mm countersink, which can be drilled into a hole with a diameter of 6.2mm to 6.3mm. The hole is about 1mm deep, which is the height of the screw to the top of the board after the screw is in the board. (Note: do not use a hammer.)

用锥形扩孔工具预钻孔

在板上预钻孔

Pre-drilling With Taper Reaming Tool

Pre-drilling On The Board



预钻孔直径
Prebore Diameter

6.2-6.3mm

3

将板用螺钉安装在框架上
安装首张板如图所示

Install The Board With The Plate Screws On The Frame
The First Installed Board Is As Shown



4

清洁板边
完全将板边清理干净

Clean The Board Edge
Clean The Edge Completely

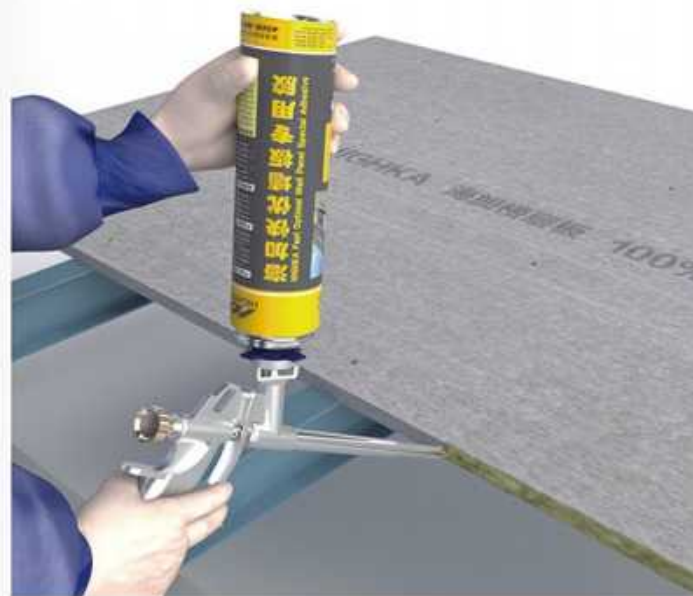
5

将海加快优墙板专用胶分别抹在已安装板板边及下张需要安装的板边上

将海加快优墙板专用胶如图所示打在板边侧面上

Apply the Highka Fast Superior Wallboard Special Glue to the installed board edge and the next board edge that needs to be installed.

As shown in the picture, apply the glue to the plate side.

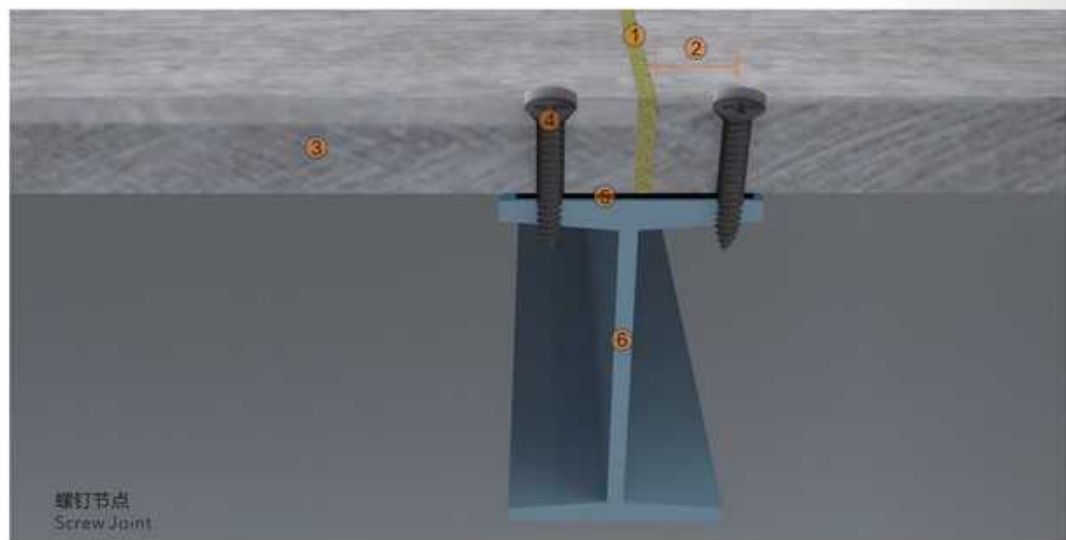


产品 Product	托梁 Joist	钢托梁0.75-1.6mm BMT Steel Joist 0.75-1.6mm Bmt	钢托梁超过1.6mm BMT Steel Joist Exceeds 1.6mm Bmt
20mm			
10g×30mm 埋头自钻镀锌螺钉 10g×30mm Countersink With Galvanized Screws	/		
10g×30mm 埋头自钻镀锌螺钉 10g×30mm Countersink With Galvanized Screws		/	
M6×30mm 埋头自钻镀锌螺钉及垫圈 M6×30mm Countersink With Galvanized Screws And Gaskets			/
24mm / 25mm			
10g×40mm 埋头自钻镀锌螺钉 10g×40mm Countersink With Galvanized Screws.	/		
10g×40mm 埋头自钻镀锌螺钉 10g×40mm Countersink With Galvanized Screws.		/	
M6×40mm 埋头自钻镀锌螺钉及垫圈 M6×30mm Countersink With Galvanized Screws And Gaskets.			/

6

将下张板平稳放在安装位置上
确定下张板的位置

Put the next board to the installation site flatly.
Make sure the position of the next board



- ① 板缝用海加快优墙板专用胶 (0.5-1mm间隙)
- ② 板边距离最小12mm
- ③ 海隔板
- ④ 自攻钉
- ⑤ 隔音减震垫
- ⑥ 托梁

Slab Joint With Highka Fast Superior Wallboard Special Glue(the Gap 0.5-1mm)
Minimum Distance Between Board Edge 12mm
Higer Board
Tapping Screw
Sound insulation and damping pad
Joist

7

预钻孔及安装板 (如图所示)

预钻下张需要安装板的孔

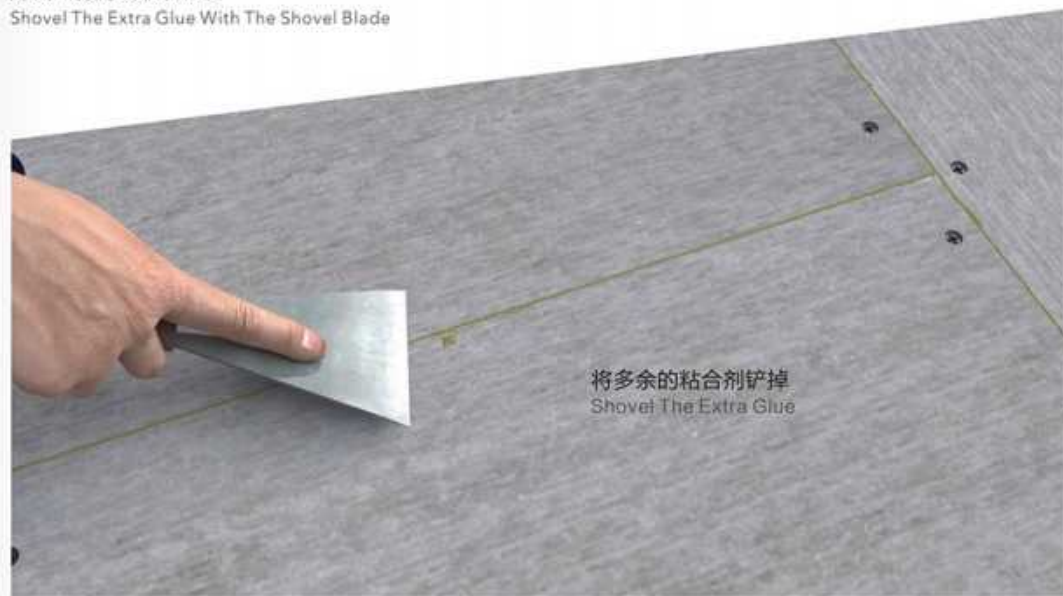
Prebore And Install The Board (as Shown)
Prebore The Next Board



8

用铲刀将多余的胶水铲掉

Shovel The Extra Glue With The Shovel Blade



将多余的粘合剂铲掉
Shovel The Extra Glue

9

仅用于潮湿区域——用海加快优墙板专用胶填补螺钉口，并将多余粘合剂铲掉。

For wet area only—use the Highka Fast Superior Wallboard Special Glue to fill the screw hole, and shovel the extra adhesive.



10

用湿布将表面清理干净，安装瓷砖或其他表面装饰材料

Clean the surface with wet cloth, install ceramic tiles or other surface decorative materials

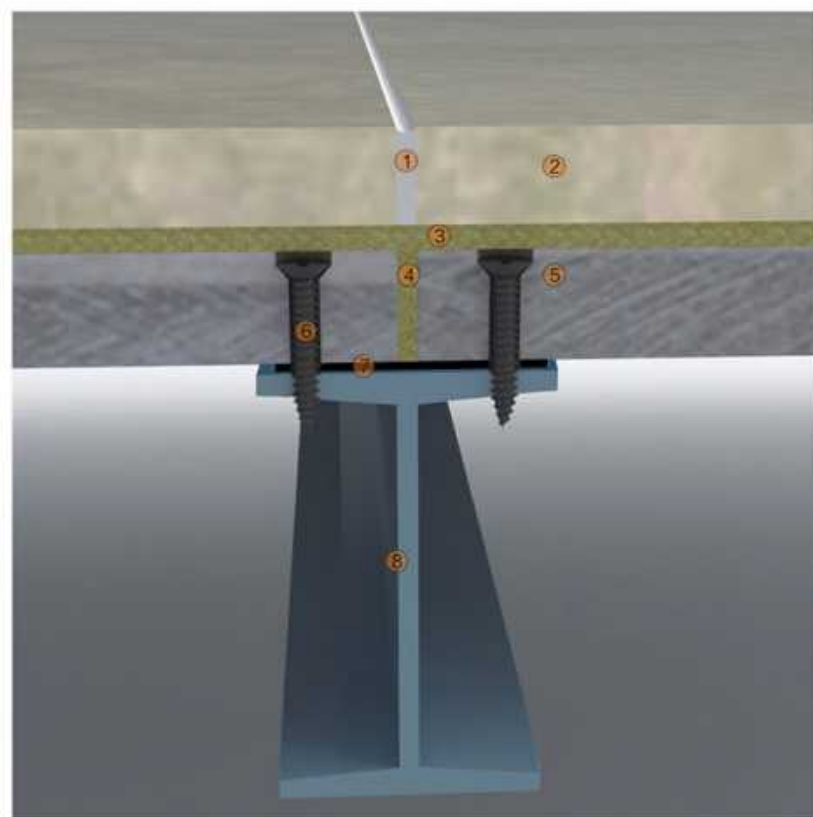


安装瓷砖

可以通过使用适量瓷砖胶，将瓷砖直接安装在海阁板上。当海阁板用于地板系统，通常可以用聚合改性水泥砂浆做垫层。

install ceramic tiles

You can use moderate tile glue to install the ceramic tiles on the Higer board. When Higer board is apply to the floor system, usually it can be used polymer modified cement mortar as the concrete cushion.



瓷砖托梁，无灰浆层
ceramic tile joist, with no mortar layer

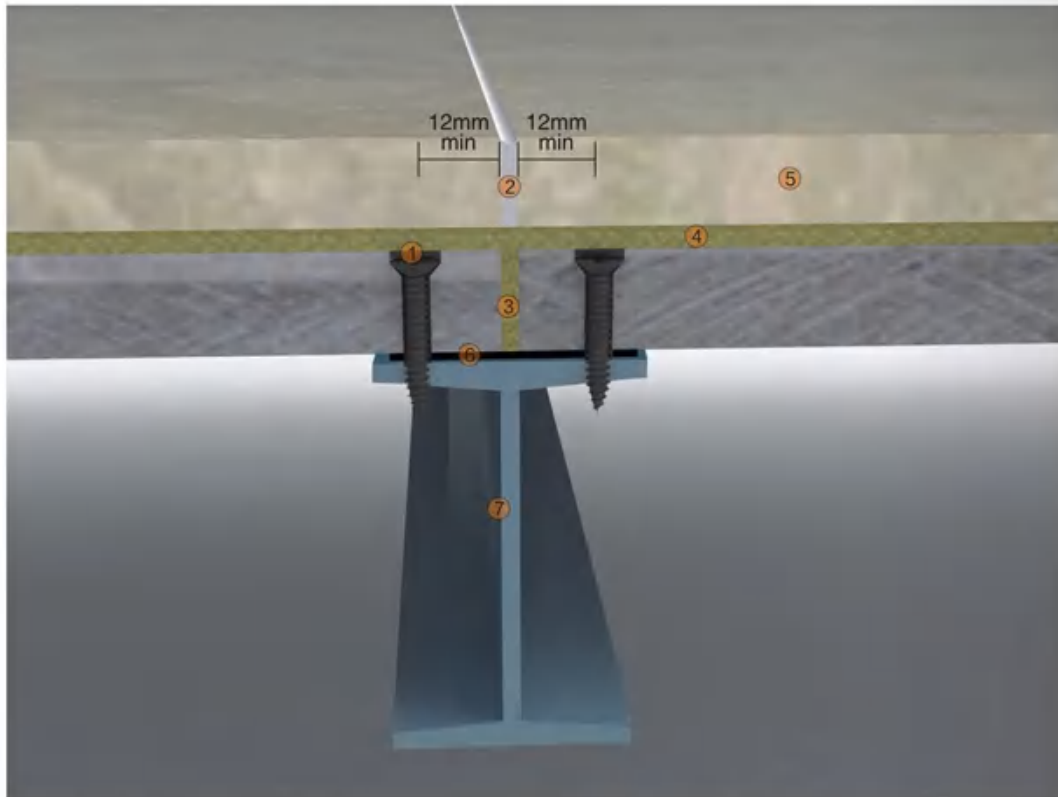
- | | |
|---------------|---|
| ① 用于潮湿区域柔性密封胶 | Flexible Sealant For The Moist Area |
| ② 瓷砖 | Ceramic Tile |
| ③ 海加快优墙板专用胶 | Highka Fast Superior Wallboard Special Glue |
| ④ 海加快优墙板专用胶 | Highka Fast Superior Wallboard Special Glue |
| ⑤ 海阁板 | Higer Board |
| ⑥ 自攻钉 | Tapping Screw |
| ⑦ 隔音减震垫 | Sound insulation and damping pad |
| ⑧ 托梁 | Trimming Joist |

接缝处理

长和宽空间距离均超过5米时，在铺设非弹性伸缩的地片材与铺地片材（如瓷砖与瓷砖）之间，建议留一条伸缩缝。伸缩缝宽度为3mm~5mm，内先填发泡塑胶条，再填聚氨酯密封胶。当海阁板与其他地板用基材，如木地板系统或混凝土板毗邻时，也建议留伸缩缝。

joint treatment

If the space of length and width exceed 5 meters, it is suggested to leave an expansion joint between the inelastic ground sheet and flooring sheet (e.g. between tiles and tiles). The width of expansion joint is 3mm-5mm, stuff the foamed plastic strip inside first, then fill the PU Sealants. When Higer Board is used as base material with other floor board (e.g. wooden floor system is adjacent to the concrete slab), it is also recommended to leave an expansion joint.



- | | |
|------------------------|--|
| ① 在潮湿区域螺钉口用海加快优墙板专用胶填满 | Fill The Screw Hole With Highka Fast Superior Wallboard Special Glue In The Moist Area |
| ② 最小间隙5mm | The Minimum Gap 5mm |
| ③ 海加快优墙板专用胶 | Silicone Sealant Or Pu Sealants |
| ④ 海加快优墙板专用胶 | Highka Fast Superior Wallboard Special Glue |
| ⑤ 瓷砖 | Ceramic Tile |
| ⑥ 隔音减震垫 | Sound insulation and damping pad |
| ⑦ 托梁 | Joist |

灰浆层

灰浆层厚度小于30mm。

150mm宽的镀锌金属网带加固，网带网孔直径约1mm，置于灰浆板缝隙必须用灰浆层加层中间。
水泥灰浆层必须是25mm的标称厚度。

加强——至少30mm 石板与大理石通常用于地板铺设。

A. 石板地板铺设

石板可能与瓷砖有着同样的使用方法。石板厚度不得小于9mm厚

B. 大理石地板铺设

灰浆层（如图所示）

mortar layer

minimum thickness of mortar layer is 30mm.

Reinforcing with 150mm galvanized metal mesh belt, the diameter of mesh belt and mesh is around 1mm, the mortar board gap must be added layer in the middle with mortar layer.

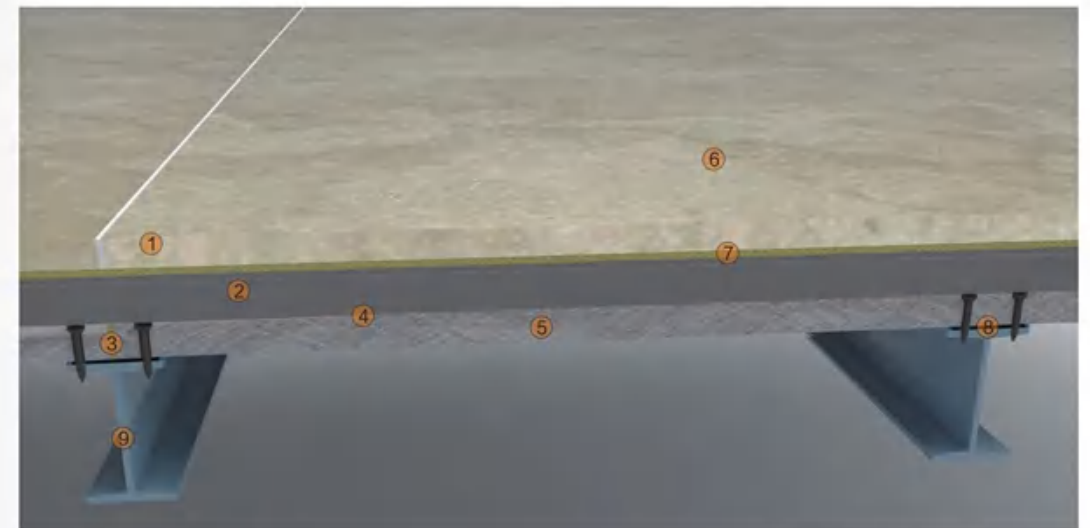
The cement mortar must be the nominal thickness 25mm. Strengthen—no less than 30mm slates and marbles are usually used for floor laying.

A. slate floor laying

The usage to the slates possibly is the same as the ceramic tile. The thickness of the slate shall not be less than 9mm.

B. marbles floor laying

mortar layer(as shown)



安装瓷砖前允许用灰浆找平

Allow the mortar to be flatten before installing the tiles

- | | |
|-----------------------------------|---|
| ① 大理石、瓷砖用海加快优墙板专用胶安装在灰浆层上 | Install The Mortar And Tiles On The Mortar Layer With Highka Fast Superior Wallboard Special Glue |
| ② 最小30mm厚灰浆层，用50*50*2.5mm网孔镀锌铁丝加固 | The Minimum Thickness Of Mortar Layer 30mm, Reinforcing With 50*50*2.5mm Galvanized Wire Mesh |
| ③ 托梁上的海加快优墙板专用胶 | Highka Fast Superior Wallboard Special Glue On The Joist |
| ④ 防水薄膜 | Waterproof Film |
| ⑤ 海阁板 | Higer Board |
| ⑥ 瓷砖 | Ceramic Tile |
| ⑦ 海加快优墙板专用胶 | Highka Fast Superior Wallboard Special Glue |
| ⑧ 隔音减震垫 | Sound insulation and damping pad |
| ⑨ 托梁 | Joist |



模块化装配式应用

Modular assembly application

模块化装配式箱体具有钢结构集成模块化建筑特点，能够快速反应大规模项目、急工期需求，工厂与现场并行建造，较传统建筑模式节约50%以上施工工期，可用于建造住宅、酒店、学校、医院等。

海加装配式CFC楼板可应用于模块化装配式箱体和集成房屋的地板、楼梯，地板系统由“轻钢龙骨+隔音棉+海加板（海加装配式CFC楼板）”组成，可加铺设装饰面板！应用广泛，建设周期快，坚固耐用，隔音隔热，可移动，可回收利用，性价比高。

The modular assembled box has the characteristics of steel structure integrated modular building, which can quickly respond to large-scale projects and urgent construction requirements. The factory and the site are built in parallel, saving more than 50% of the construction time compared with the traditional building model, and can be used to build houses, hotels, schools, hospitals, etc.

HIGHKA assembled CFC floor slab is applied to the floor and stairs of modular assembled box and integrated house. The floor system is composed of "light steel keel+soundproof cotton+Higer board (HIGHKA prefabricated CFC floor slab)", and decorative panels can be added! Widely used, fast construction cycle, durable, sound insulation, removable, recyclable, cost-effective.



海加合作伙伴

HIGHKA cooperative partners

发展商

Developer

长隆集团
保利集团
招商地产
万达集团
绿地集团
华润地产
岭南集团
中集集团
温氏集团
海印集团
香江地产
华润集团
世贸集团
融创中国
华侨城集团
碧桂园集团
白云国际机场股份
万豪国际酒店集团公司
周大福新世界地产
仁恒置地集团
广东中集建筑制造有限公司
中国平安
宜家家居
...

总包方

General contractor

中国建筑第一工程局有限公司
中国建筑第二工程局有限公司
中国建筑第三工程局有限公司
中国建筑第四工程局有限公司
中国建筑第五工程局有限公司
中国建筑第六工程局有限公司
中国建筑第七工程局有限公司
中国建筑第八工程局有限公司
中建科技集团有限公司
中建科工集团有限公司
中建海龙科技有限公司
广东省建筑工程集团有限公司
上海宝冶集团有限公司
北京建工集团有限责任公司
上海建工集团股份有限公司
上海绿地建筑工程有限公司
中国五冶集团有限公司
广州市第四建筑工程有限公司
四川华西集团有限公司
广州建筑股份有限公司
...

装饰单位

Decoration unit

苏州金螳螂建筑装饰工程有限公司
中建深圳装饰有限公司
深圳文业装饰设计工程有限公司
深圳广田装饰有限公司
深圳市中装建设集团股份有限公司
深圳市宝鹰建设集团股份有限公司
深圳市奇信建设集团股份有限公司
深圳市晶宫建筑装饰集团有限公司
深圳海外装饰工程有限公司
深圳华辉装饰工程有限公司
深圳卓艺装饰设计工程有限公司
深圳市中航装饰设计工程有限公司
广东省美术设计装饰工程有限公司
浙江银建装饰工程有限公司
浙江亚厦装饰股份有限公司
北京城建深港建筑装饰工程有限公司
上海建筑装饰工程集团有限公司
中建八局装饰工程有限公司
...



中運海龍



中建科技



中建科工



广东建工



招商地產



CIMC 中集



保利®地產

海加装配式CFC楼板系统部分工程案例

Some engineering cases of the HIGHKA CFC floor system



广州保利金沙大都汇



佛山高明高登国际广场



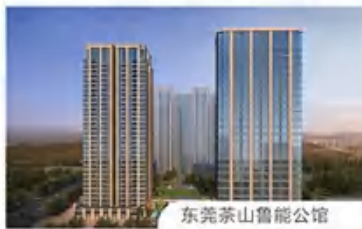
佛山智创谷



海口海南银行总部大楼



海口东城碧桂园



东莞茶山鲁能公馆



海南三亚公园88号



深圳大疆天空之城大厦



惠州碧桂园潼湖科技小镇

- ① 佛山智创谷（智汇广场）
- ② 中科院南海海洋研究所科研主楼
- ③ 广州城投保利金沙大都汇
- ④ 惠州碧桂园潼湖科技小镇
- ⑤ 海口海南银行总部大楼
- ⑥ 海口东城碧桂园
- ⑦ 深圳中建钢构大疆天空之城大厦
- ⑧ 东莞茶山鲁能公馆
- ⑨ 佛山高明高登国际广场
- ⑩ 海南三亚公园88号

... ..

海加提供的服务

Services provided by HIGHKA

整体系统解决方案

Whole System Solutions

紧贴客户需求，提供高性价比的整体系统服务方案。
Provide high cost-effective whole system service solutions close to customer needs.

深化系统设计

Deepening System Design

根据应用方案进行深化设计，使产品应用在整体化、标准化、可循环化得到实施，绿色低碳设计。
Deepen design depending on applications to achieve integration, standardization and cycling of product application. The design is green and low-carbon.

工厂工业化定制

Factories' Industrialization Customization

现代工业化生产、标准化产品、品质保证、也可根据项目要求定制特殊尺寸。
Modern industrial production, standardized products, quality assurance, Special sizes can be customized according to project requirements.

模块化安装施工

Modularization of Installation and Construction

装配式、干作业、无粉尘、机械化施工和管理科学化，施工高效快捷。
Fabricated, dry operation, no dust, mechanical construction and scientific management, fast and efficient construction.

技术支持

Technical Support

提供技术集成、工业链接技术、系统技术等等。
Provide technical integration, industrial link technology, system technology and so on.

服务保障

Service Guarantee

国际化质量体系保障、行业技术标准验收、星级服务标准。
International quality system guarantee, industry technical standards of acceptance, star service standard.

海加相关的系统产品：

Related System Products of HIGHKA:

墙体系统 Wall System	吊顶系统 Ceiling System	专业防火系统 Professional Fireproofing Systems	专业隔音系统 Professional Soundproofing System
装饰板系统 Decoration Board System	轻钢龙骨系统 Light Steel Keel System	轻钢制造 Light Steel Manufacturing	装配式集成房屋 Modular Integrated House
地板系统 Floor System	地坪系统 Artesian Floor System	装配式玻璃隔断墙系统 Fabricated Glass Partition Wall System	等等..... So On.....